

Izerwaren
Order
numbers

3 point locking mechanism for light cabinet doors
up to 6' 7" high
Can be used as 2 point locking (up and down)
Can be used as 1 point locking (up or down)

23.225 **Push Button Mechanism** (details page 2-3)

23.002 **Espagnolette bolt sets**

1 set:
2 rods of 6 mm x 1000 mm
2 hooks
2 pins
2 guides
Rods nickel plated steel, other parts nickel plated
dycast.

PARTS SEPARATE:

23.052 **Strike flush** (225FLU)

58 mm x 10 mm, nickel plated brass

23.072 **Strike plate angle** (225ANG)

40 mm x 12 mm x 12 mm; Nickel plated steel

23.012 **Strike plate angle** (226ANG)

30 mm x 13 mm x 8 mm; nickel plated **brass**

23.015 **Extension Brass** (225EX)

15 mm (5/8") To allow for door thickness of approx.
1 1/4" Use lock-tite to arrest button

23.005 **Extension Brass** (228EX)

5 mm To allow for door thickness 24 mm
(Hollow core doors + veneer).

23.008 **Extension Brass** (227EX)

8 mm To allow for door thickness of 27 mm
(for drawers with hollow core faces + veneer)

23.067 **Filler plates clear plastic**

1 mm thick filler plates; use when cabinet door
thickness is less then 19 mm ~ 3/4".

23.415 **Hooks**, set of two, mirror image,
specify top or bottom

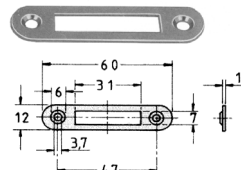
23.3151 **Guides for hooks**, nickel plated diecast

23.065 **Rods** 6 or 8 mm diameter, 1000 mm long, steel
nickel plated. Other sizes on request available

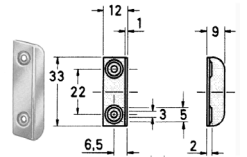
23.011 **Guides for rod**
guides for rod 6 mm diameter, nickel plated diecast

23.030 **Strike pin on plate** (225PIN)

to arrest hooks, to be mounted on door sill;
adjustable.



#23.052 Strike plate flush for lock



#23.072 Strike plate angle for lock



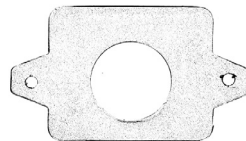
#23.015 Extension 15 mm - 5/8 with thread



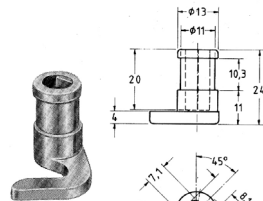
#23.005 Extension 5 mm - glue in button



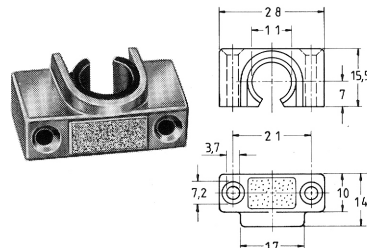
#23.008 Extension 8 mm glue in button



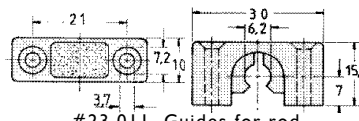
#23.067 Filler plate 1 mm



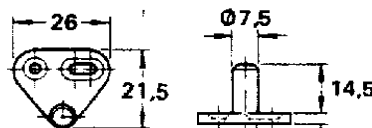
#23.415 Hooks, set of two



#23.3151 Guides for hooks



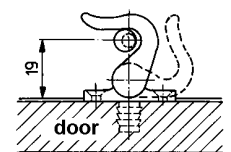
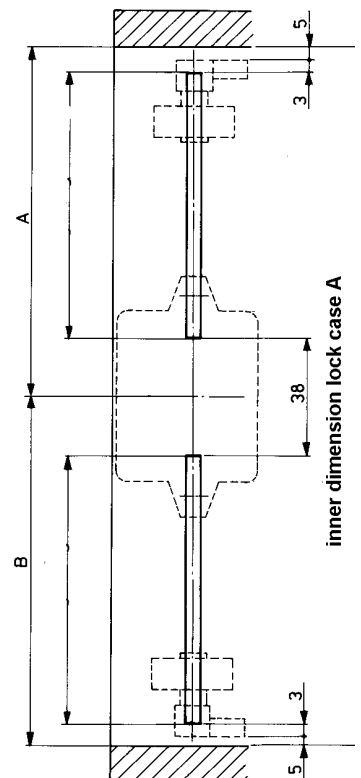
#23.011 Guides for rod



#23.030 Strike pin on plate for hooks



Three point lock with
espagnolette bolts and hooks
top and/or bottom locking



Espagnolette bolts diagram
For up and down or
up or down locking